

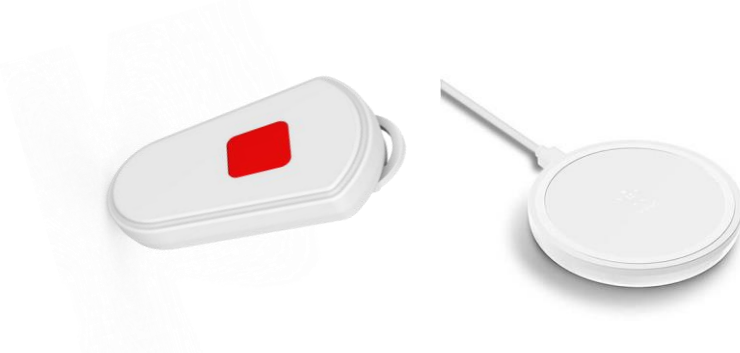


Wireless Panic Button

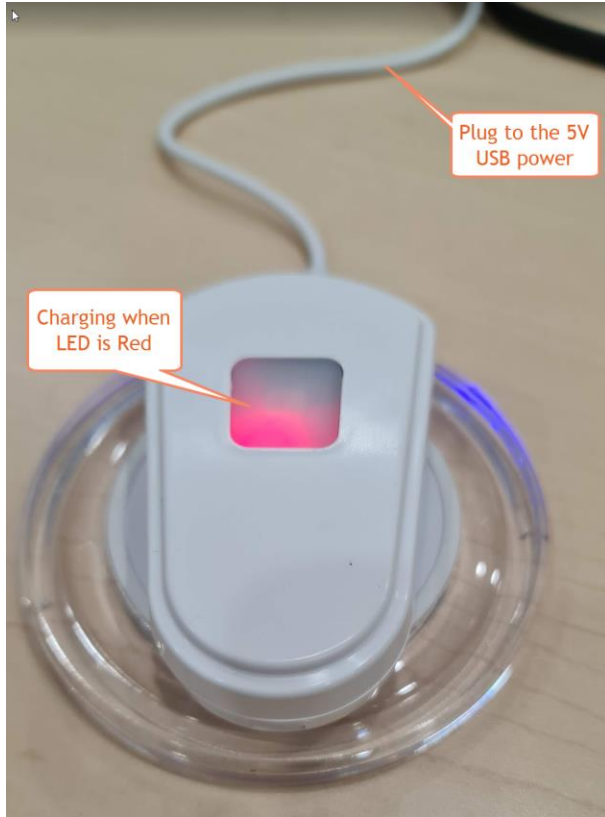
Quick Guide



1. Before using Panic Button please fully charge it. In order to charge put on the Qi Wireless charger and ensure that Red Led is On. It may flash during the charge. Confirmation that is fully charged when LED turns green.

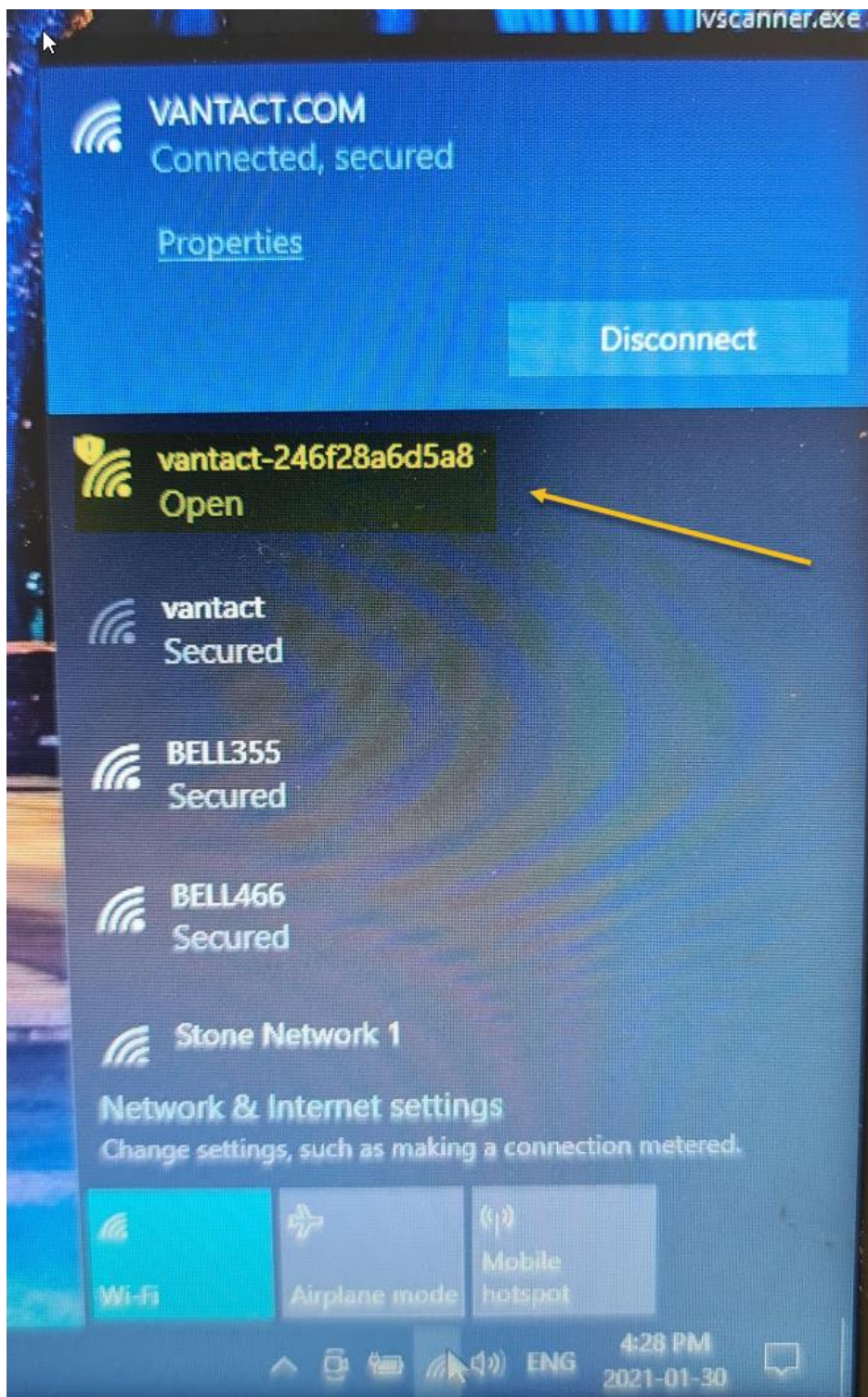


2. Quick press will activate Alarm mode. Red Led starting to flash and internal Buzzer is On. Button in few seconds will be connected to the Wi-Fi and will deliver Alarm to the EMS Server, and next will start to scan Positioning points. Every 7 seconds is sending list of points to the EMS server, in order to calculate his location.
3. EMS is popping-up Alarm on the Live Panel and updating Panic Button Location. Keep in mind that button works in supervision mode, and if Wi-Fi signal is lost or weak, it will continue to send until will not receive confirmation from server. It is important to have strong Wi-Fi signal, if not the battery will drain quick.
4. In order to Cancel Alarm, is required to Hold the Button longer than 6 seconds. The LED will turn Off and Buzzer deactivated.
5. If the Panic Button need to be programmed again, i.e., Wi-Fi new settings, Name, ID etc. then to activate programming mode do the following:
 - a. Enable Alarm Mode, LED and buzzer must be activated
 - b. Press 25 times the button until the buzzer will shut off
 - c. Now the button works in Access point mode
 - d. Go to your laptop or PC with the Wi-Fi enabled
 - e. Search for the vantact-xxxxxxx SSID and connect to it, it is open
 - f. In the browser type 192.168.168.1, no user and password prompt
 - g. In the provided page go through the settings, change all as required
 - h. Go to the save menu, and click on the page on the Save button
 - i. Button will reboot and go to the deep sleep mode.



When Programming mode is activated, Panic Button goes to the Access Point Mode, and using any Wi-Fi enabled device, i.e., Laptop, Tablet or Smart Phone you can connect directly to the web interface of the Panic Button.

Go to the list of available WIFI Networks and connect to something like this



Then in the address bar of your favorite browser type <http://192.168.168.1>

← → ↻ ⚠ Not secure | 192.168.168.1 ☆ ☆

CONTROLLED CARE

General

- * Status
- @ EMS server
- BLE
- WiFi access
- Save

Status

Battery Level	443119
MAC Address	24:6f:28:a6:d5:a8
MAC Address (Bluetooth)	24:6f:28:a6:d5:aa
IP address	
WiFi SSID	
BLE send Period	6
BLE MeasuredPower	0
BLE TxPower	0
Presense Timer	0

← → ↻ ⚠ Not secure | 192.168.168.1/ems.htm ☆ ☆

CONTROLLED CARE

General

- * Status
- @ EMS server
- BLE
- WiFi access
- Save

EMS Server

EMS Server	http://172.16.16.175/authbeaconcode/
Scan Result Uri	http://172.16.16.175/authpositioningarraycode/
Base Name	VARENIK
Presense Timer	0

1. Address of the EMS where Alarms to be sent
2. Address where to send Positioning Point location
3. Name to identify the Panic Button, must be unique per facility
4. Presence in seconds if planning to use it
5. Save parameters to the flash memory

← → ↻ ⚠ Not secure | 192.168.168.1/ble.htm ☆ ⌵

CONTROLLED CARE

General

- * Status
- @ EMS server
- BLE
- WiFi access
- Save

BLE Settings

iBeacon ▾

UUID	00000000-0000-0000-0000-000000000000
MeasuredPower	0
TxPower	0
Timer to Send	6
Major	0
Minor	0

Save

How often to send scanning results for the positioning calculation

← → ↻ ⚠ Not secure | 192.168.168.1/wifi.htm ☆ ⌵

CONTROLLED CARE

General

- * Status
- @ EMS server
- BLE
- WiFi access
- Save

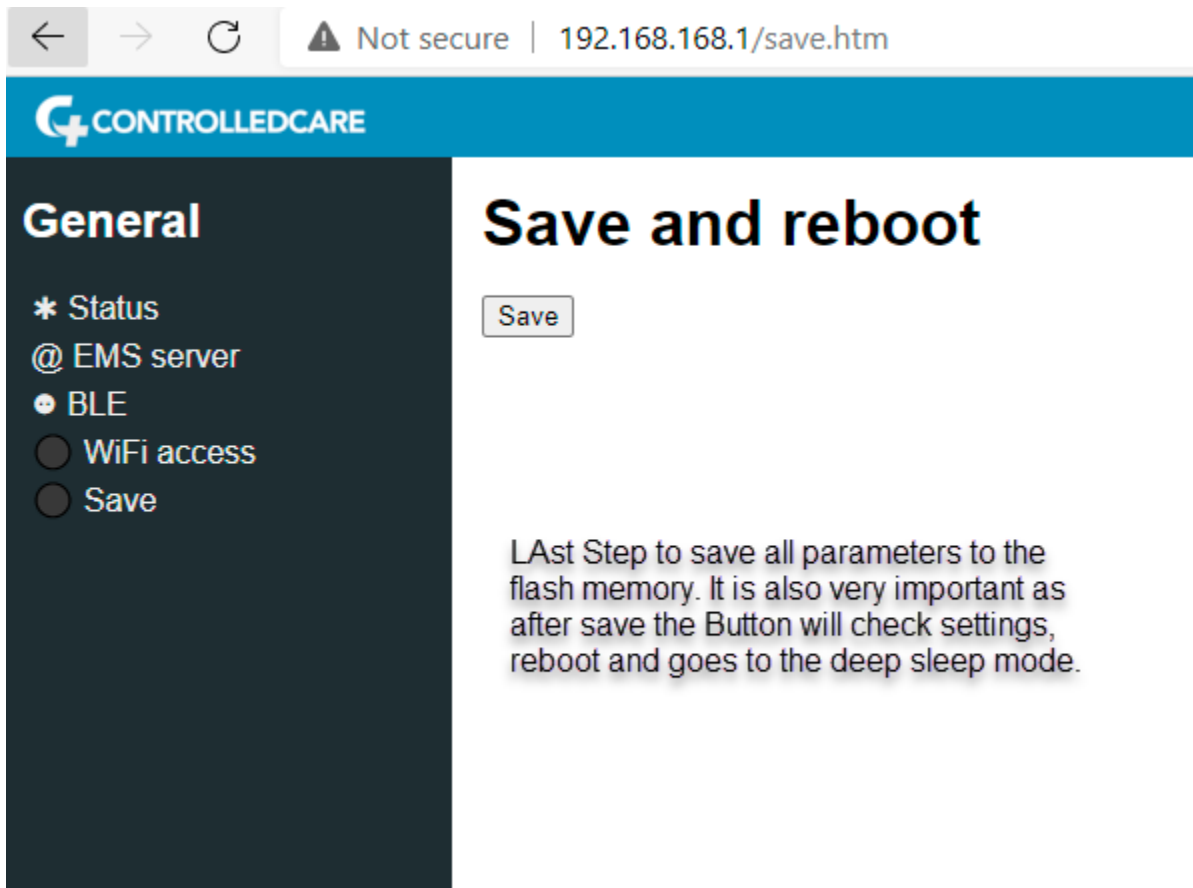
Wi-Fi Settings

WiFi ▾

SSID	VANTACT.COM
Password	vantact+

Save

Very Important !!!
Wi-Fi credentials to be used for the Nurse Call Network.
If incorrect, weak or unstable Wi-Fi than delivery may be late and in reason of the supervision mode, button will try always to connect , and if not good connection it will drain the battery quick.



Please keep the Panic Button always charged, do not allow to be fully discharged as the battery used is standard Li-Io battery type, and if discharged may leak and destroy internal components. Internal charger has overcharge protection, so is safe to keep it on the Qi charge overnight, full time etc. and use the button when is required.

# Scenario	Steps	Expected Outcome
1	1. AP ON 2. Panic button SLEEPING 3. Activate alarm, wait for location 4. AP OFF 5. Deactivate alarm 6. AP ON	Step 3 - alarm event sent to EMS, location sent to EMS Step 4 - location looping and added to queue in panic button, not able to send to EMS Step 5 - normal event registered in panic button, trying to send packets from queue Step 6 - packets sent from queue to EMS, normal event sent to EMS, panic button goes to sleep
2	1. AP OFF 2. Panic button SLEEPING 3. Activate alarm 4. AP ON 5. Deactivate alarm	Step 3 - alarm event trying to send to EMS, location not activate until alarm is sent Step 4 - alarm event sent to EMS, location looping and added to queue in panic button, queue packets sent to EMS Step 5 - normal event sent to EMS, panic button goes to sleep
3	1. AP OFF 2. Panic button SLEEPING 3. Activate alarm 4. Deactivate alarm 5. AP ON	Step 3 - alarm event trying to send to EMS, location not activate until alarm is sent Step 4 - normal event registered in panic button, waiting for alarm event to send through first, led starts to flash 2 times faster, buzzer starts to ring two times faster Step 5 - alarm event sent to EMS, normal event sent to EMS, panic button goes to sleep and changes LED and Buzzer frequency to original