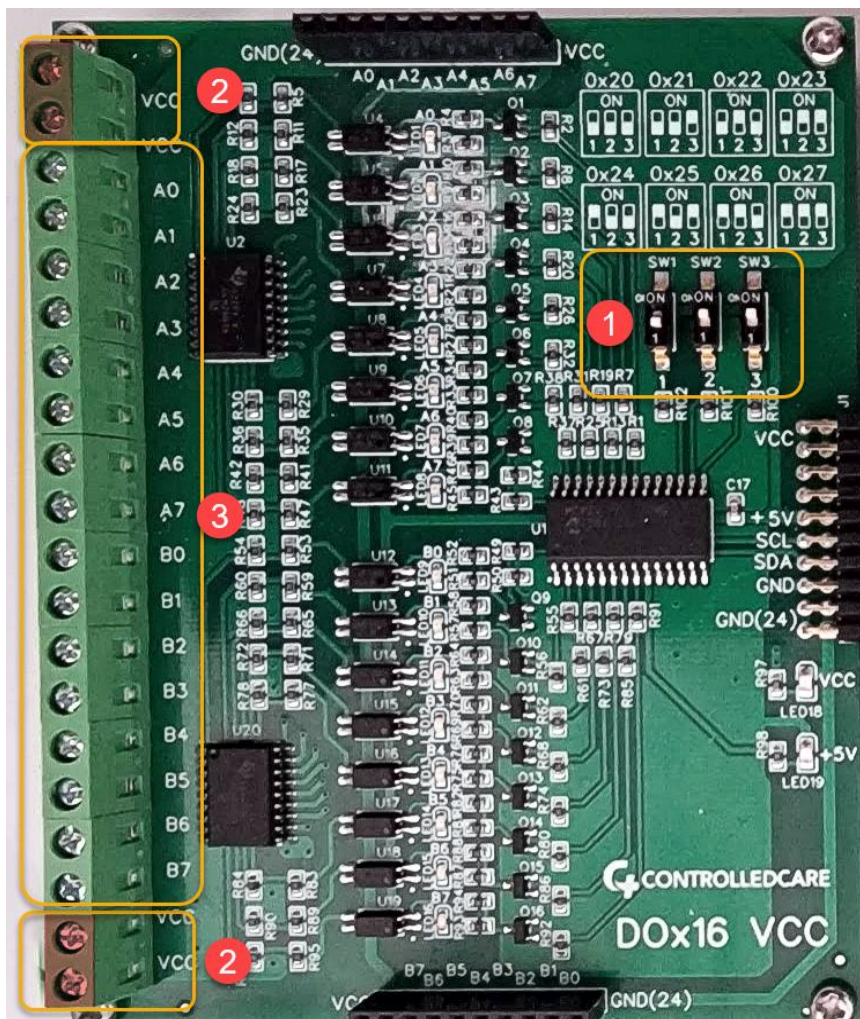


DIGITAL OUTPUTS Dox16 Module

This module is designed to trigger and control devices in the rooms, such as Dome Lights, Illuminated buttons, buzzers, horns or any manageable end devices. In total 16 outputs per module are supported, with the common VCC (from 28V to 5V powered).

1. Each module must have own unique address, can be set using these dip switches
2. Common VCC (24V) for all inputs emulate NO mode, and when NC are sent to input.
3. All outputs are in NO mode, and on activated change the output to NC to ground.



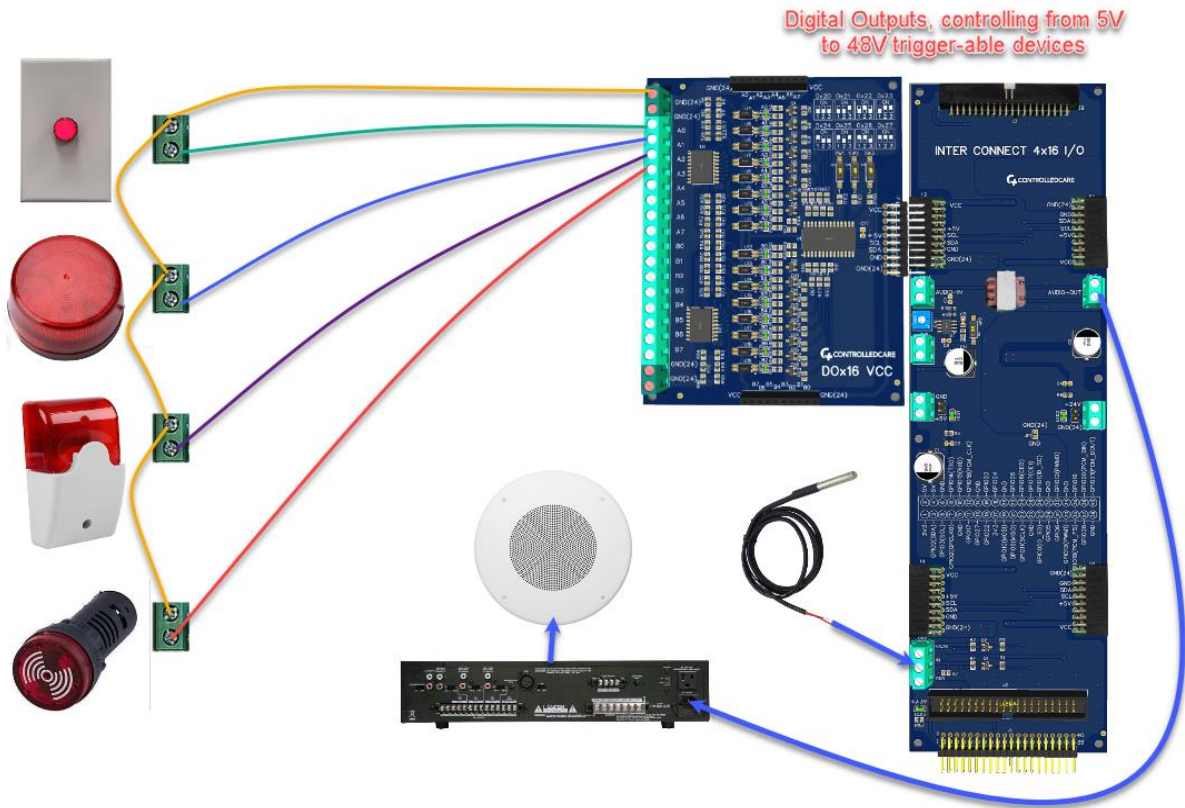
Usage and options.

Dox16 module can manage up to 16 different controllable devices with the common VCC. Regular output status is Normally Open, and is changing to Normally Close when is activated. Maximum current per output is 500mA, which is more than enough for all existing devices.

Each output goes to the remote connected manageable device (Dome Light, LED, Buzzer etc.)

In order to control High-Voltage and High-Power devices, is required to attach to this module a special Relays Board, and each existing DO will control own relay.

Typical connection diagram



VCC and GND-24 a galvanically isolated from 5V, so can not to burn MCU board, and must be powered from the separate power source.

Outputs can be grouped together, have different modes, - steady, solid, pulsing, blinking fast or slow.